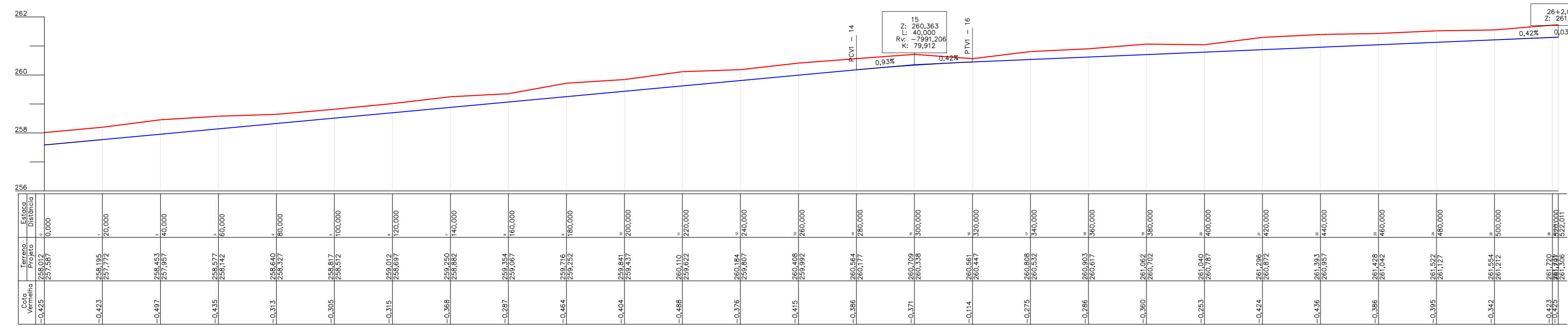
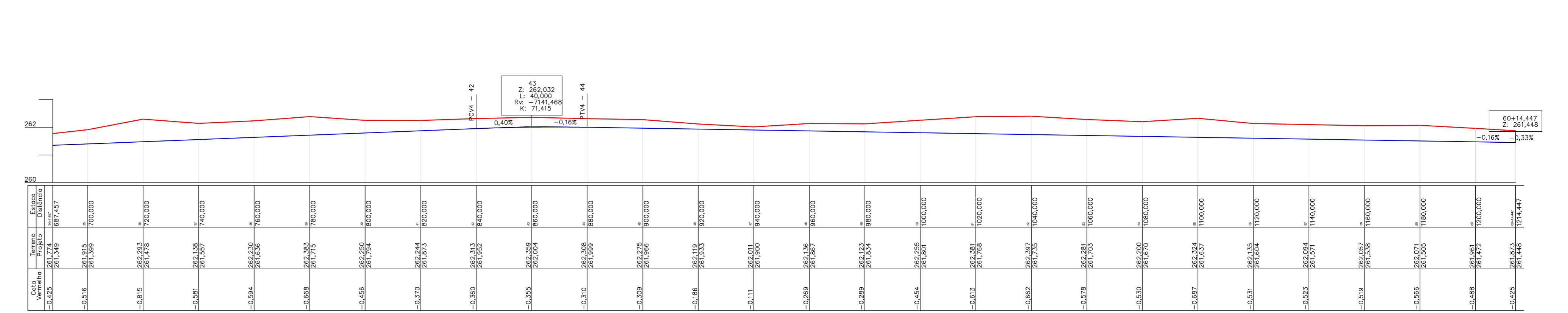


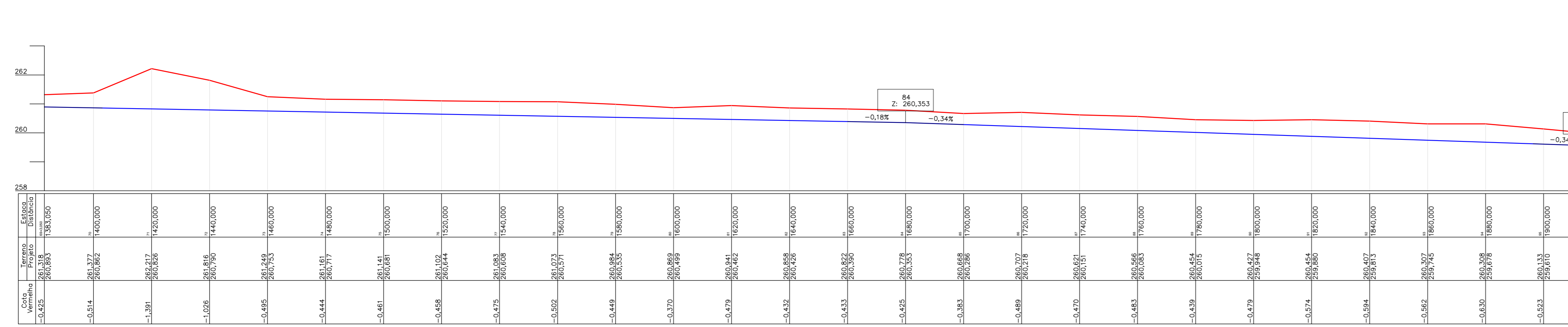
NS-010 – Entre LO-25 a LO-23



NS-010 – Entre LO-23 a LO-21



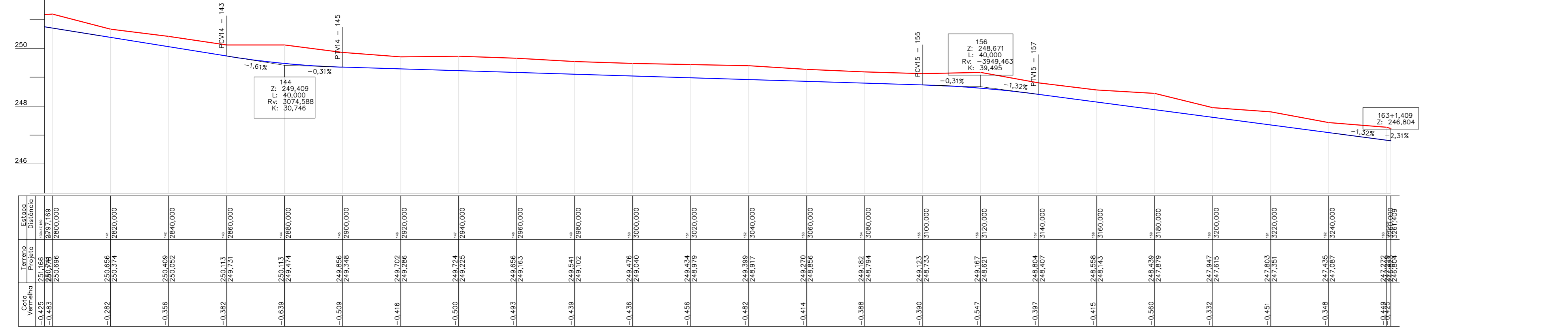
NS-010 – Entre LO-21 a LO-19



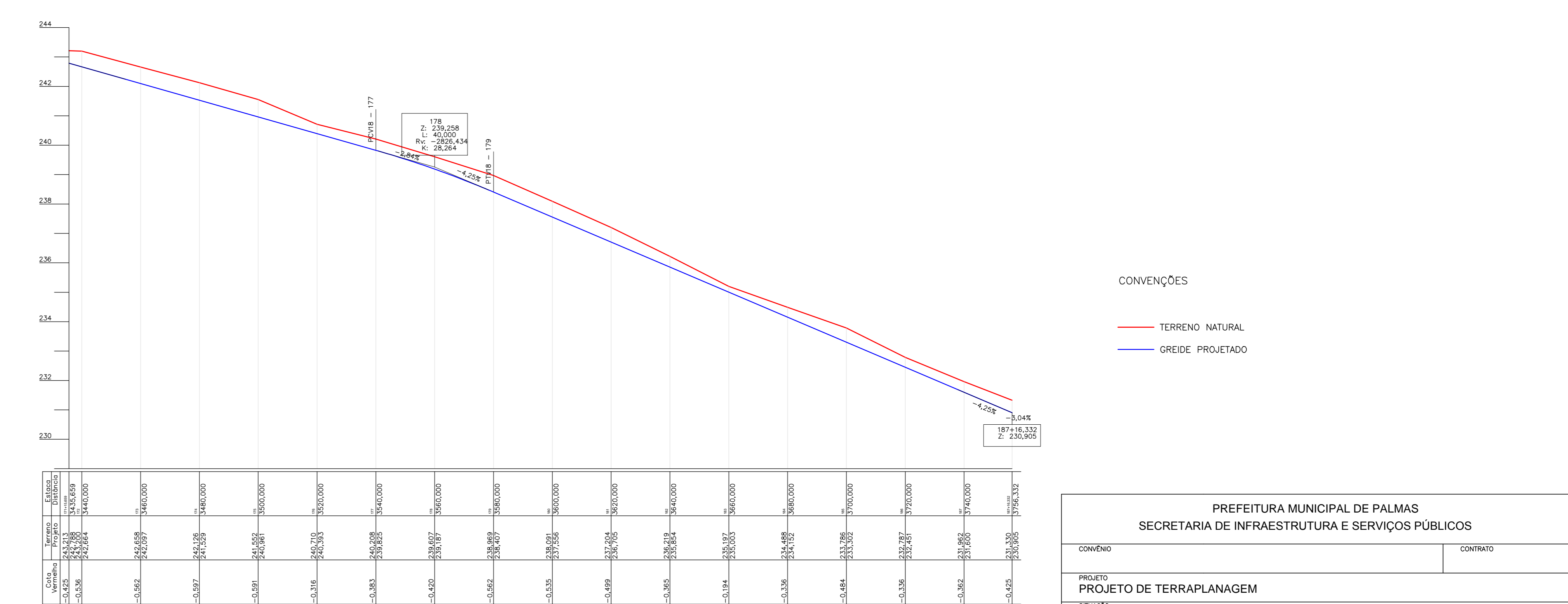
NS-010 – Entre LO-19 a LO-15

TRECHO JÁ EXECUTADO

NS-010 – Entre LO-15 a LO-13



NS-010 – Entre LO-13 a LO-11



CONVENÇÕES
 — TERRENO NATURAL
 — GREIDE PROJETADO

PREFEITURA MUNICIPAL DE PALMAS
 SECRETARIA DE INFRAESTRUTURA E SERVIÇOS PÚBLICOS

PROJETO DE TERRAPLANAGEM

AVENIDA NS-010, PISTA DIRETA ENTRE LO-25 A LO-03, PALMAS-TO

PROJETO EXECUTIVO

ESCALA: 1/1000 - VER. 1/100

REVISÃO: MARÇO/2019

RESPONSÁVEL TÉCNICO: ROBERTO LEMOS MUNIZ - END* CIVIL - CRM: 12.493-D/PE

Rua Ricardo Salazar, 83, Prado, Recife-PE.
 CEP 50.720-120 Fone/Fax: (0**81) 3878-5555.
 e-mail: geosistemas@geosistemas.com.br
 C.N.P.J.: 70.075.275/0001-50